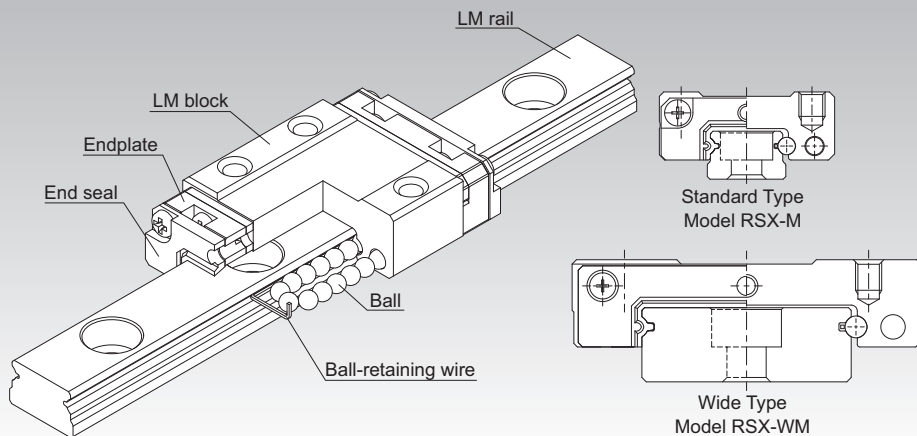


RSX

LM Guide Miniature Type Model RSX



Point of Selection **A1-10**

Point of Design **A1-454**

Options **A1-477**

Model No. **A1-543**

Precautions on Use **A1-549**

Accessories for Lubrication **A24-1**

Mounting Procedure and Maintenance **B1-89**

Equivalent Moment Factor **A1-43**

Rated Loads in All Directions **A1-59**

Equivalent Factor in Each Direction **A1-61**

Radial Clearance **A1-71**

Accuracy Standards **A1-83**

Shoulder Height of the Mounting Base and the Corner Radius **A1-469**

Permissible Error of the Mounting Surface **A1-471**

Flatness of the Mounting Surface **A1-472**

Dimensions of Each Model with an Option Attached **A1-491**

Structure and Features

With the Model RSX, balls roll in two rows of raceways precision-ground on an LM rail and an LM block, and end plates incorporated in the LM block allow the balls to circulate. The Model RSX uses two rows of raceways, and it can help reduce the size of a device because it has more compact outer dimensions than models with four raceways. Despite being compact, its ball contact structure is capable of receiving loads in all directions, and it can be used individually in locations where moments are applied.

[Ultra Compact]

The Model RSX has one raceway on either side of the LM rail, and its compact design with low cross-sectional height allows it to be installed in locations with limited space.

[Corrosion Prevention]

The Model RSX uses an LM block, LM rail, and balls made of stainless steel, which has high corrosion resistance.

[Retains Balls]

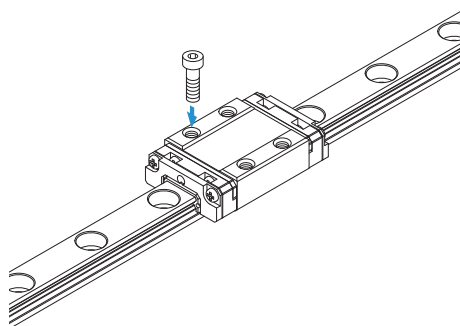
The Model RSX incorporates a ball-retaining wire that prevents balls from falling out when the LM block is removed from the LM rail, making mounting easy.

Types and Features

Model RSX-M

A standard type of RSX.

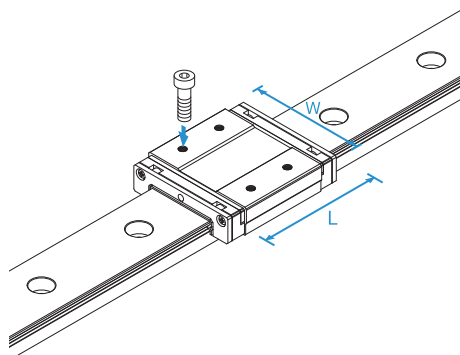
Specification Table⇒ **A1-256**



Model RSX-WM

Has a longer overall LM block length (L), a greater width and a larger rated load and permissible moment than RSX-M.

Specification Table⇒ **A1-258**



Flatness of the LM Rail and the LM Block Mounting Surface

Since the Model RSX has Gothic-arch grooves, any precision errors in the mounting surface may negatively affect its operability. Therefore, we recommend using it on mounting surfaces made with high precision.

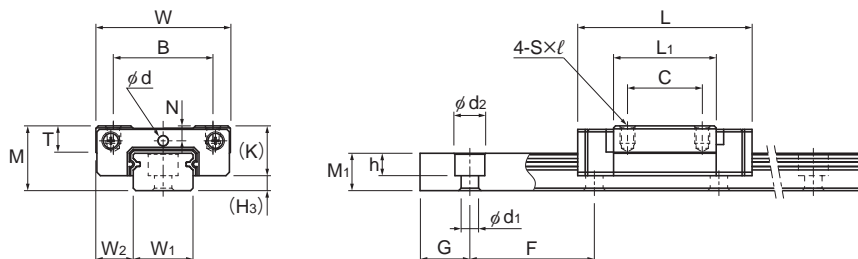
Table1 Flatness of the LM Rail and the LM Block Mounting Surface

Unit: mm

Model No.	Flatness error
RSX 7	0.025/200
RSX 9	0.035/200
RSX 12	0.050/200
RSX 15	0.060/200

- Note1) As there are many cases in which the mounting surface precision is affected by a number of factors, we recommend using 70% or less of the values shown.
- Note2) The above figures apply to normal clearances. When using two or more rails with C1 clearance, we recommend using 50% or less of the values shown.

Model RSX-M



Models RSX7 to 12M

Model No.	Outer dimensions			LM block dimensions										H _s
	Height	Width	Length									Greasing hole	Grease nipple	
	M	W	L	B	C	S×ℓ	L ₁	T	K	N	E	d		
RSX 7M	8	17	23.4	12	8	M2×2.6	13.4	—	6.5	1.7	—	1.2	—	1.5
RSX 9M	10	20	30.8	15	10	M3×2.8	19.8	—	7.8	2.4	—	1.6	—	2.2
RSX 12M	13	27	35	20	15	M3×3.5	20.6	5.3	10	3	—	2	—	3
RSX 15M	16	32	42.9	25	20	M3×4	25.7	5.8	12	3	4	—	PB107	4

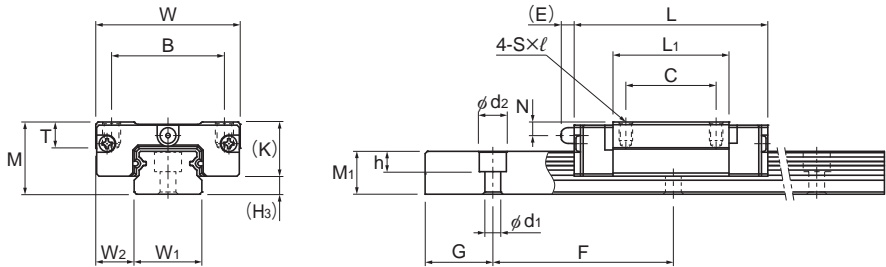
Note) Since stainless steel is used in the LM block, LM rail, and balls, these models are highly resistant to corrosion and environment. Using a greasing hole for anything other than greasing may cause damage.

Model number coding

2	RSX12M	UU	C1	+220L	P	M	- II
Model number	Contamination protection accessory symbol (*2)	LM rail length (in mm)	Stainless steel LM rail	Symbol for No. of rails used on the same plane (*5)			
No. of LM blocks used on the same rail (*1)	Radial clearance symbol (*3) Normal (No symbol) Light preload (C1)	Accuracy symbol (*4) Normal grade (No Symbol)/High accuracy grade (H)/Precision grade (P)					

(*1) No symbol for 1 LM block. (*2) See contamination protection accessories on **A1-516**.
(*3) See **A1-71**. (*4) See **A1-83**. (*5) See **A1-13**.

Note) This model number indicates that a single-rail unit constitutes one set (i.e., the required number of sets when 2 rails are used in parallel is 2 at a minimum).



Model RSX15M

Unit: mm

LM rail dimensions							Basic load rating		Static permissible moment N*m*					Mass				
Width		Height	Pitch	Length*			C	C ₀	M _A		M _B		M _C	LM block	LM rail			
W ₁	W ₂	M ₁	F	d ₁ × d ₂ × h			Max	kN	kN	1 block		2 blocks		1 block	kg	kg/m		
7	5	4.7	15	2.4 × 4.2 × 2.3			480	1.16	1.54	3.27		23.1		3.77	26.7	5.96	0.008	0.227
9	5.5	5.5	20	3.5 × 6 × 3.3			1240	2.22	3.06	9.87		57.9		11.4	66.9	14.1	0.018	0.32
12	7.5	7.5	25	3.5 × 6 × 4.5			2000	3.36	4.21	14.2		92.5		14.2	92.5	27.6	0.037	0.65
15	8.5	9.5	40	3.5 × 6 × 4.5			2000	5.59	6.78	29		186		29	186	48.1	0.069	0.96

Note1) The maximum length under "Length*" indicates the standard maximum length of an LM rail. (See [A1-260](#).)

Static permissible moment* 1 block: The static permissible moment with one LM block

2 blocks: Static permissible moment when two LM blocks are in close contact with each other

Total block length L

: The total block length L shown in the table is the length with the dust-proof parts (code: UU).

Note2) The basic load rating in the dimension table is for a load in the radial direction. Use Table7 on [A1-59](#) to calculate the load rating for loads in the reverse-radial direction or lateral direction.

- Reference bolt tightening torque when mounting an LM block for model RSX7M is shown in the table below.

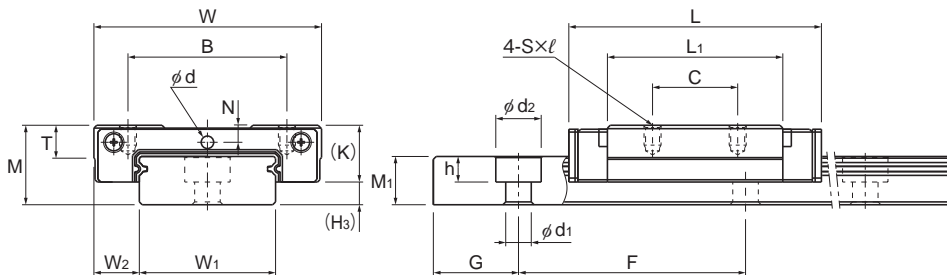
Reference Tightening Torque

Model No.	Model No. of screw	Screw depth (mm)	Reference tightening torque (N*m)*
RSX 7M	M2	2.3	0.4

* Tightening above the tightening torque affects accuracy.

Be sure to tighten at or below the defined tightening torque.

Model RSX-WM



Models RSX7 to 12WM

Model No.	Outer dimensions			LM block dimensions										H _s
	Height	Width	Length	B	C	S×ℓ	L ₁	T	K	N	E	Greasing hole	Grease nipple	
	M	W	L									d		
RSX 7WM	9	25	31	19	10	M3×2.8	20.4	—	7	1.8	—	1.2	—	2
RSX 9WM	12	30	39	21	12	M3×2.8	27	—	8.3	2.3	—	1.6	—	3.7
RSX 12WM	14	40	44.5	28	15	M3×3.5	30.9	4.5	10	3	—	2	—	4
RSX 15WM	16	60	55.5	45	20	M4×4.5	38.9	5.6	12	3	4	—	PB107	4

Note) Since stainless steel is used in the LM block, LM rail, and balls, these models are highly resistant to corrosion and environment. Using a greasing hole for anything other than greasing may cause damage.

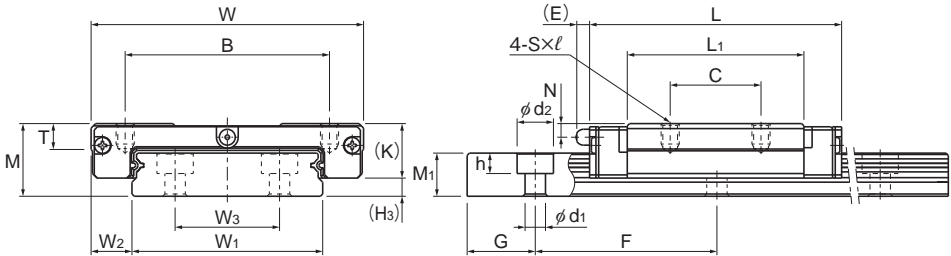
Model number coding

2 RSX12WM UU C1 +220L P M - II

<p>Model number</p> <p>No. of LM blocks used on the same rail (*1)</p>	<p>Contamination protection accessory symbol (*2)</p> <p>Radial clearance symbol (*3) Normal (No symbol) Light preload (C1)</p>	<p>LM rail length (in mm)</p>	<p>Stainless steel LM rail</p>	<p>Symbol for No. of rails used on the same plane (*5)</p>
--	---	-------------------------------	--------------------------------	--

(*1) No symbol for 1 LM block. (*2) See contamination protection accessories on **A1-516**. (*3) See **A1-71**. (*4) See **A1-83**. (*5) See **A1-13**.

Note) This model number indicates that a single-rail unit constitutes one set (i.e., the required number of sets when 2 rails are used in parallel is 2 at a minimum).



Model RSX15WM

Unit: mm

LM rail dimensions								Basic load rating		Static permissible moment N•m*					Mass	
Width	W ₂	W ₃	Height	Pitch	Length*	d ₁ × d ₂ × h	C	C ₀	M _A		M _B		M _C	LM block	LM rail	
									1 block	2 blocks	1 block	2 blocks	1 block			
14	5.5	—	5.2	30	3.5 × 6 × 3.2	480	1.63	2.51	8.08	46.9	9.32	54.2	18.5	0.018	0.54	
18	6	—	7.5	30	3.5 × 6 × 4.5	1430	2.8	4.28	18.5	99.3	21.4	115	40.5	0.035	1.01	
24	8	—	8.5	40	4.5 × 8 × 4.5	2000	4.46	6.31	30	171	30	171	79.2	0.075	1.52	
42	9	23	9.5	40	4.5 × 8 × 4.5	2000	7.43	10.1	61.4	343	61.4	343	211	0.17	2.87	

Note1) The maximum length under "Length*" indicates the standard maximum length of an LM rail. (See [A1-260](#).)

Static permissible moment * 1 block: The static permissible moment with one LM block

2 blocks: Static permissible moment when two LM blocks are in close contact with each other

Total block length L

: The total block length L shown in the table is the length with the dust-proof parts (code: UU).

Note2) The basic load rating in the dimension table is for a load in the radial direction. Use Table7 on [A1-59](#) to calculate the load rating for loads in the reverse-radial direction or lateral direction.

- Reference bolt tightening torque when mounting an LM block for model RSX7WM is shown in the table below.

Reference Tightening Torque

Model No.	Model No. of screw	Screw depth (mm)	Reference tightening torque (N•m)*
RSX 7WM	M2	2.8	0.4

* Tightening above the tightening torque affects accuracy.

Be sure to tighten at or below the defined tightening torque.

Standard Length and Maximum Length of the LM Rail

Table2 shows the standard lengths and the maximum lengths of model RSX variations. If the maximum length of the desired LM rail exceeds them, jointed rails will be used. Contact THK for details. For special rail lengths, it is recommended to use a value corresponding to the G,g dimension from the table. As the G,g dimension increases, this portion becomes less stable, and the accuracy performance is severely impacted.

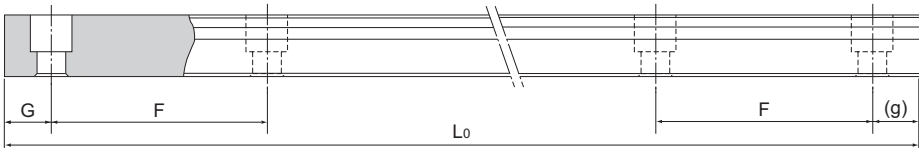


Table2 Standard Length and Maximum Length of the LM Rail for Model RSX

Unit: mm

Model No.	RSX 7	RSX 7W	RSX 9	RSX 9W	RSX 12	RSX 12W	RSX 15	RSX 15W
LM rail standard length (L ₀)	40	50	55	50	70	70	70	110
	55	80	75	80	95	110	110	150
	70	110	95	110	120	150	150	190
	85	140	115	140	145	190	190	230
	100	170	135	170	170	230	230	270
	115	200	155	200	195	270	270	310
	130	260	175	260	220	310	310	430
		290	195	290	245	390	350	550
			275	320	270	470	390	670
			375		320	550	430	790
				370		470		
				470		550		
				570		670		
						870		
Standard pitch F	15	30	20	30	25	40	40	40
G,g	5	10	7.5	10	10	15	15	15
Max length	480	480	1240	1430	2000	2000	2000	2000

Note1) The maximum length varies with accuracy grades. Contact THK for details.

Note2) If jointed rails are not allowed and a greater length than the maximum values above is required, contact THK.

